

Model IS-33-B Inspection System

Model IS-33-B is an Optical Inspection and Yield-monitoring System used after die attach or wire bonding or SMT process. The system mainly consists of a highly reliable and fully programmable magazine handler mounted on a programmable XY table, an inspection Microscope or CCTV , with option of 45 Deg Oblique View Mirror or Vision Recognition Software. The inspection data is presented as electronic Map files and stored in a local hard disk. The data can be retrieved instantly at the machine, or transferred to a host server. Various optional accessories are available for making visible identifications of defective units. The system can be used for 100% or QC sampling inspection with user defined classifications. When used with DIAS networking system, it provides effective data recording, processing and yield monitoring throughout the

Main features:

- Fully programmable Indexing System
- 100% Indexing Reliability
- Capability to handle thin, wide & long strips
- High accuracy programmable XY Table
- User programmable defects classifications
- User programmable inspection modes
- Data Collection for production or QC
- Online Process Control and Yield Monitoring
- High quality images of Microscope / CCTV
- Live display of image, Map machine status
- Networking ready for factory automation
- Ergonomic design with small foot print



Capabilities and Specifications:

- Handling System

Strip / Frame Size
 Length 4.0" - 12.0" (100 - 300 mm)
 Width 0.6" - 4.0" (15 - 100 mm)
 Thickness 0.004" - 0.030" (0.10 - 0.80 mm) - Standard
 0.030" - 0.080" (0.80 - 2.00 mm) - Optional

Magazine
 Length 4.0" - 12.4" (100 - 315 mm)
 Width 0.8" - 4.4" (10 - 112 mm)

Elevator
 Z-Travel 0 - 6" (0 - 150 mm) Standard
 0 - 8" (0 - 200 mm) Optional

Indexer
 Indexing method by programmable side gripper
 Track Width programmable
 Indexing Accuracy +/- 0.002" (50 um)

- XY Table

XY Travels 3" x 4" (76 x 100 mm)
 Accuracy 0.001" (25 um)

- User Interface

Display Screen 17" Color LCD
 Input Device 22-key Keypad, PC Trackball
 F1-F4 Quick Access Keypad

- Utility, Size and Weight

Power 220V/110V, 500 Watts
 Compressed Air 70 PSI (5 Bar), 0.4 CFM
 Dimension 1150mm(W)x760mm(D)x1270mm(H)
 Weight 300 Kg



GUI Display of Menu and Map



Rotary Oblique View Attachment

Accessories & Options:

- Microscopes / CCTV

Stereo Zoom Microscopes
 High resolution color CCTV
 45 Degree Oblique View Attachment

Reject identification device

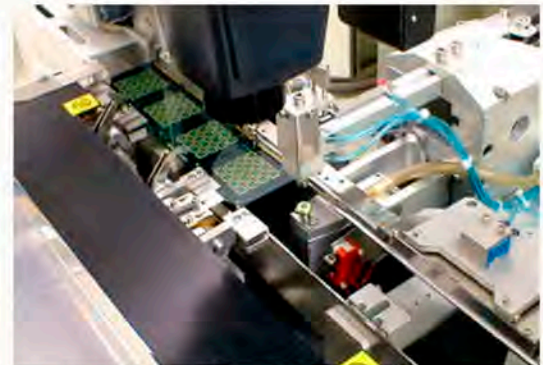
Electronic Mapping
 Lead Puncher / Mechanical Scribe
 Ink Marker / Wire Breaker
 Laser Marker

- Auto Vision System

Pattern Recognition
 Character / Mark Recognition

Networking System

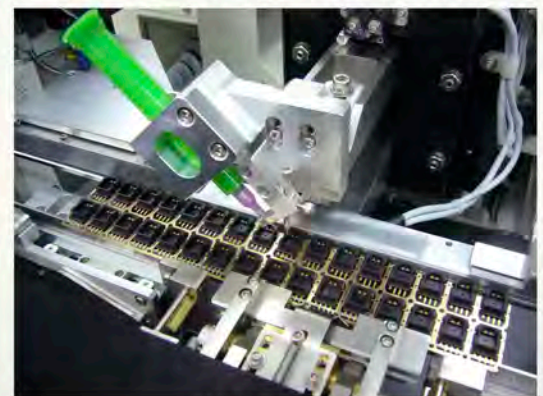
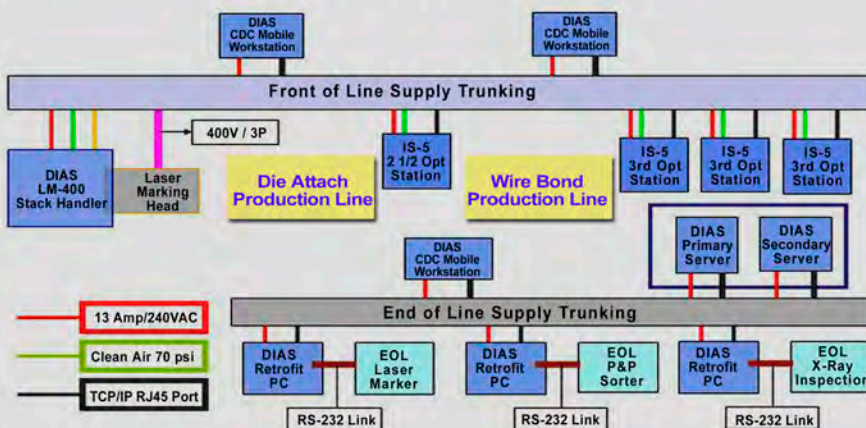
1D / 2D Bar Code Reader
 Map Processing & Data Collection software
 On-line Mobile Work Station



Lead Puncher / Bottom Scriber

Networking and Map processing system

Strip Mapping System Layout:



Ink Marker

Hong Kong (Headquarters & Factory)

DIAS Automation Ltd.

Unit 7-8, 3/F, Block A, Merit Industrial Bldg.,
 94 Tokwawan Road, Kowloon, Hong Kong

Tel. : (852) 2333-6298

Fax : (852) 2764-0187

Email : sales@diasautomation.com

DIAS
 AUTOMATION

www.diasautomation.com