

# Model IS-5-B Inspection System

Model IS-5-B is an Optical Inspection and Yield-monitoring System used after die attach or wire bonding or SMT process. The system mainly consists of a highly reliable and fully programmable magazine handler mounted on a programmable XY table, an inspection Microscope or CCTV , with option of 45 Deg Oblique View or Vision Recognition system. The inspection data is presented as electronic Map files and stored in a local hard disk. The data can be retrieved instantly at the machine, or transferred to a host server. Various optional accessories are available for making visible identifications of defective units. The system can be used for 100% or QC sampling inspection with user defined classifications. When used with DIAS networking system, it provides effective data recording, processing and yield monitoring throughout the entire assembly process.



### Main features:

- Fully programmable Indexing System
- 100% Indexing Reliability
- Capability to handle thin, wide & long strips
- High accuracy programmable XY Table
- User programmable defects classifications
- User programmable inspection modes
- Data Collection for production or QC
- Online Process Control and Yield Monitoring
- High image quality zoom Microscope / CCTV
- Live display of image, Map and machine status
- Networking ready for factory automation

# Capabilities and Specifications:

## - Handling System

Strip / Frame Size  
 Length 4.0" - 12.0" (100 - 300 mm)  
 Width 0.6" - 4.0" (15 - 100 mm)  
 Thickness 0.004" - 0.030" (0.10 - 0.80 mm) - Standard  
 0.030" - 0.080" (0.80 - 2.00 mm) - Optional

Magazine  
 Length 4.0" - 12.4" (100 - 315 mm)  
 Width 0.8" - 4.4" (10 - 112 mm)

Elevator  
 Z-Travel 0 - 6" (0 - 150 mm) Standard  
 0 - 8" (0 - 200 mm) Optional

Indexer  
 Indexing method by programmable side gripper  
 Track Width programmable  
 Indexing Accuracy +/- 0.002" (50 um)

## - XY Table

XY Travels 3" x 4" (76 x 100 mm)  
 Accuracy 0.001" (25 um)

## - User Interface

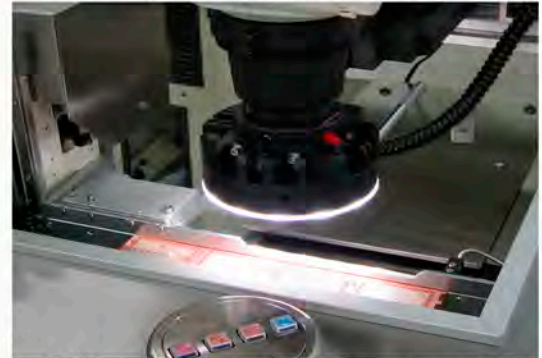
Display Screen 17" Color LCD  
 Input Device 22-key Keypad, PC Trackball  
 F1-F4 Quick Access Keypad

## - Utility, Size and Weight

Power 220V/110V, 500 Watts  
 Compressed Air 70 PSI (5 Bar), 0.4 CFM  
 Dimension 990mm(W)x760mm(D)x1270mm(H)  
 Weight 300 Kg



GUI Display of Menu and Map



Rotary Oblique View Attachment

## Accessories & Options:

### - Microscopes / CCTV

Stereo Zoom Microscopes  
 High resolution color CCTV  
 45 Degree Oblique View Attachment

### Reject identification device

Electronic Mapping  
 Lead Puncher / Mechanical Scribe  
 Ink Marker / Wire Breaker  
 Laser Marker

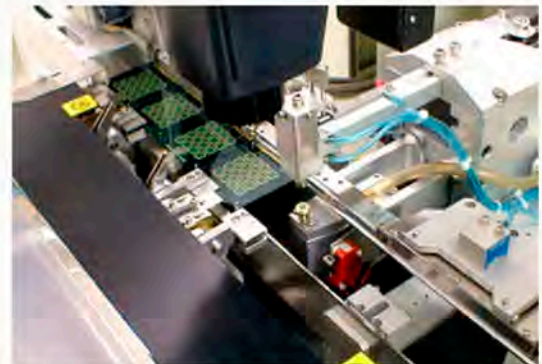
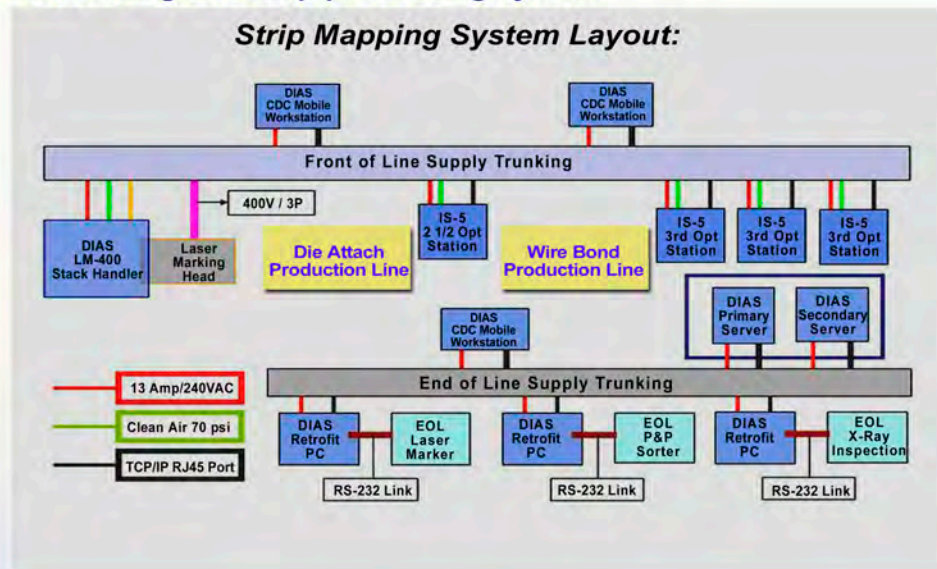
### - Auto Vision System

Pattern Recognition  
 Character / Mark Recognition

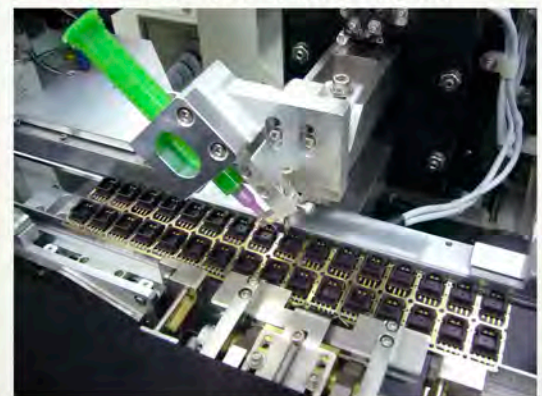
### Networking System

1D /2D Bar Code Reader  
 Map Processing & Data Collection software  
 On-line Mobile Work Station

## Networking and Map processing system



Lead Puncher / Bottom Scribe



Ink Marker

## Hong Kong (Headquarters & Factory)

DIAS Automation Ltd.  
 Unit 7-8, 3/F, Block A, Merit Industrial Bldg.,  
 94 Tokwawan Road, Kowloon, Hong Kong  
 Tel. : (852) 2333-6298  
 Fax : (852) 2764-0187  
 Email : sales@diasautomation.com